



Hotel Solutions



Combining customer safety & business intelligence

Many hotel brands now offer much more than just short-term accommodation. New services such as beauty and massage, hosted events, fine dining and meeting room facilities are constantly being added to their existing offering. Some hotels have also expanded into the resorts and long-term accommodation (aparthotel) markets. The hotel industry has evolved its business model, attracting different types of customers with new requirements which all need to be managed.

Hanwha Techwin offer solutions that extend beyond just standard CCTV systems, intelligent audio and video analytics provide the industry with the business insights needed to increase customer satisfaction and boost productivity.

Highlights

- **Comprehensive camera range** – to suit any environment and project budget
- **Scalable recording platform** – utilizing multiple network video recorders (NVRs) or server based solutions from industry leading vendors
- **Control of your system with multiple viewing solutions** – from simple to use workstation interface, to large multi-display video wall as well as smartphone access
- **Intelligent analytics** – On-camera embedded data, video and audio analytics
- **Reduce your network infrastructure** – with our series of embedded ethernet ports NVRs and PoE extender cameras
- **We move with Trust** – Confidence in the brand with 5 year warranty

Surveillance and business intelligence combined with Hanwha Techwin's dashboard

- **More than just CCTV** – On-camera embedded data analytics
- **Beyond security expertise** – separate from security system, central customisable web based dashboard with configurable access permissions for any stakeholders
- **Intelligent data analytics** – capture and review performance of a space within your premises using people counting, heatmap and queue management analytics
- **Export and collaborate** – Boost your reporting metrics with our customisable multi-format report function to suit any type of audiences and stakeholders



Elegant, discreet and yet powerful

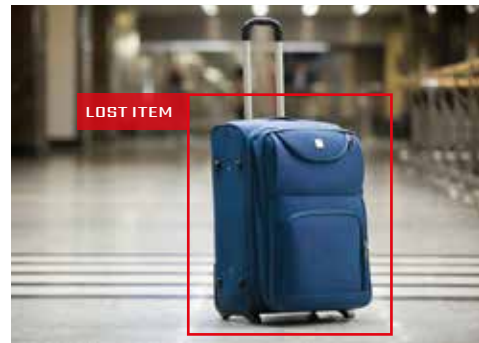
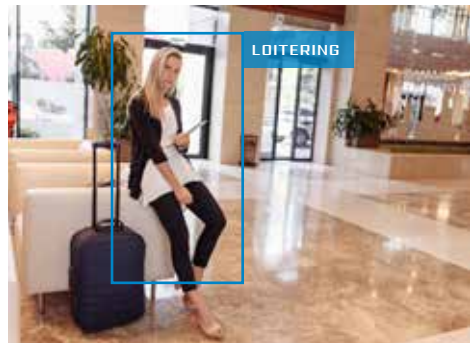
- **See more with less cameras** – extended options of fisheye and multi-sensor
- **Clarity and detail** – From dark to bright scenes
- **Easy setup and maintenance** – remotely motorised lenses
- **Power options** – connect to conventional power source or use network PoE
- **Bespoke colour finish** – cameras can be professionally sprayed to colour blend with any surface
- **Intelligent analytics** – On-camera embedded data, video and audio analytics
- **Open Platform** – custom apps





Intelligent audio and video analytics

- **Lost** – detect objects in public areas which appear to have been abandoned
- **Loitering** – detect suspicious behaviour of people remaining for longer than a pre-configured period of time
- **Intrusion detection** in forbidden areas and crossing virtual lines detection
- **Smoke & fire detection** – increase your chance of early detection
- **Audio analytics** for better situational awareness



Reduce your infrastructure requirements with PoE Extender Cameras

PoE extender cameras offer a cost-effective way to add a camera to an existing system or install a new two camera video surveillance solution. By utilising loop in and out Ethernet connectivity, network switch port allocation is reduced and network cabling requirements are minimised, overall benefiting faster installation time and reducing end-user disruption.

- CCTV Camera system: Pair up Wisenet PoE Extender camera with another camera.
- CCTV Camera system with IoT device: Pair Wisenet PoE Extender camera with another device such as Wi-Fi APs, speakers, input/output modules.

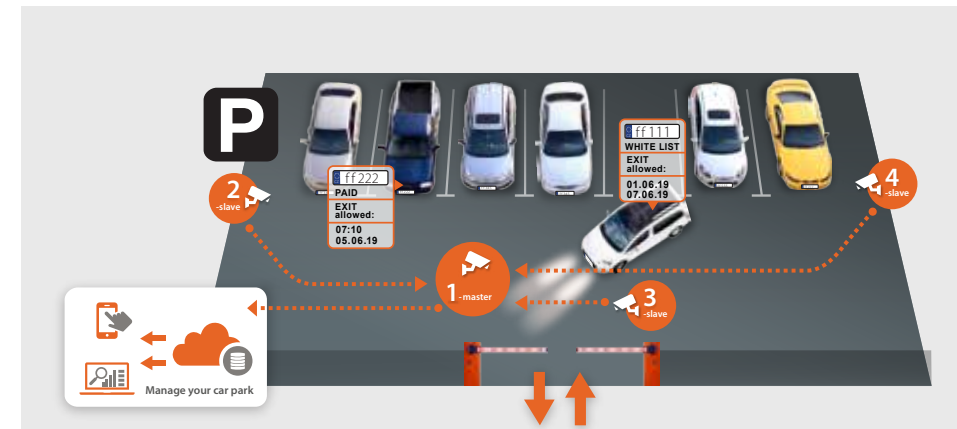


Control Room Solution

- **Easy to use** Video Management System
- **Designed for 24/7 Operation**
- **Multi-tenancy** – single platform shared by all and customizable
- **Built-in failover** – Keep your system going
- **Multiplatform** Viewing System
- **Compatible clients** Windows, macOS, Linux, iOS, Android, Web
- **Coming Soon!** Real Time Location System (RTLS), an asset tracking management system with different types of BLE sensors as well as cameras with built-in BLE.
- **Coming Soon!** Intercom system for audio and video two way communication

Digitise your parking with Serverless ANPR Solution

- **Serverless** – no need for dedicated server, all intelligence is built into the master ANPR camera that can support up to 3 additional slave cameras.
- **Automate** and time schedule your car park access with white and black list function, vehicle count, daily use metrics and unburden your staff from answering car park calls or writing down registrations, letting them focus on more important tasks.
- **Simplify parking access** – streamline your customer experience with white list feature, customers can access car park without interaction with member of staff or even getting out of the car.
- **Access control** – our hardwired input/output feature can trigger barrier, shutter, gate or even act as lift call button enabling customers to complete their journey.
- **API integration** – with our wisenet open platform we can send and receive data to any system. Systems such as Visitor Management and Property Management can associate vehicle license plate with name account and grant automatic car park access or even pre-alert concierge of arrival to meet and greet customer.



Highlights:

Master/slave set-up. No need for multiple white/black lists

- Barrier management
- No server required
- Up to 1000 number plates