



KES Co., Ltd.

3701, 40, Simin-daero 365beon-gil,
Dongan-gu, Anyang-si, Gyeonggi-do, 14057, Korea
Tel: +82-31-425-6200 / Fax: +82-31-424-0450
www.kes.co.kr

Report No.:

KES-EM-20T0030

Page (1) of (34)

EMC TEST REPORT

Test Report No. : KES-EM-20T0030

Date of Issue : Jan. 16, 2020

Product name : Network Camera

Model/Type No. : TNB-9000

Variant Mode : -

Applicant : Hanwha Techwin Co., Ltd.

Applicant Address : 6, Pangyo-ro 319Beon-gil, Bundang-gu, Seongnam-si,
Gyeonggi-do, Republic of Korea

Manufacturer : 1. HANWHA TECHWIN (TIANJIN) CO.,LTD.
2. HANWHA TECHWIN SECURITY VIETNAM CO.,LTD.
3. D-TECH CO.,LTD.

Manufacturer Address : 1. No.11 Weiliu Rd, Micro-Electronic Industrial Park, TEDA, Tianjin,
300385, People's Republic of China
2. Lot O-2, Que Vo Industrial Zone extended area,
Nam Son commune, Bac Ninh city, Bac Ninh province, Vietnam
3. 173-25, Saneop-ro, Gwonseon-gu, Suwon-si, Gyeonggi-do,
Korea (Suwon Industrial Complex)

Equipment authorization : **Supplier's Declaration of Conformity**

Date of Receipt : Dec. 26, 2019

Test date : Jan. 08, 2020

Test Results : ☒ **In Compliance** ☐ **Not in Compliance**

Tested by

Jung Jun Soo
EMC Test Engineer

Reviewed by

Dong-Hun, Jang
EMC Technical Manager

This test report is not related to KS Q ISO/IEC 17025 and KOLAS.

This report shall not be reproduced except in full, without the written approval of KES Co., Ltd.
The results shown in this test report refer only to the sample(s) tested unless otherwise stated.
The authenticity of the test report, contact shchoi@kes.co.kr

**KES Co., Ltd.**

3701, 40, Simin-daero 365beon-gil,
Dongan-gu, Anyang-si, Gyeonggi-do, 14057, Korea
Tel: +82-31-425-6200 / Fax: +82-31-424-0450
www.kes.co.kr

Report No.:

KES-EM-20T0030

Page (2) of (34)

REPORT REVISION HISTORY

Date	Test Report No.	Revision History
Jan. 16, 2020	KES-EM-20T0030	Issued

This report shall not be reproduced except in full, without the written approval of KES Co., Ltd. This document may be altered or revised by KES Co., Ltd. personnel only, and shall be noted in the revision section of the document. Any alteration of this document not carried out by KES Co., Ltd. will constitute fraud and shall nullify the document.

This report shall not be reproduced except in full, without the written approval of KES Co., Ltd.
The results shown in this test report refer only to the sample(s) tested unless otherwise stated.
The authenticity of the test report, contact shchoi@kes.co.kr



KES Co., Ltd.

3701, 40, Simin-daero 365beon-gil,
Dongan-gu, Anyang-si, Gyeonggi-do, 14057, Korea
Tel: +82-31-425-6200 / Fax: +82-31-424-0450
www.kes.co.kr

Report No.:
KES-EM-20T0030
Page (3) of (34)

TABLE OF CONTENTS

1.0	General Product Description.....	4
1.1	Test Voltage & Frequency	7
1.2	Variant Model Differences.....	7
1.3	Device Modifications	7
1.4	Equipment Under Test.....	7
1.5	Support Equipments	8
1.6	External I/O Cabling	9
1.7	EUT Operating Mode(s)	10
1.8	Configuration.....	11
1.9	Remarks when standards applied	12
1.10	Calibration Details of Equipment Used for Measurement.....	12
1.11	Test Facility	12
1.12	Laboratory Accreditations and Listings	12
2.0	Test Regulations.....	13
2.1	Conducted Emissions at Mains Power Ports.....	15
2.2	Radiated Electric Field Emissions(Below 1 GHz)	16
2.3	Radiated Electric Field Emissions(Above 1 GHz)	17
APPENDIX A – TEST DATA.....		18
Conducted Emissions at Mains Power Ports.....		18
Radiated Electric Field Emissions(Below 1 GHz)		20
Radiated Electric Field Emissions(Above 1 GHz).....		22
Test Setup Photos and Configuration		24
Radiated Electric Field Emissions(Below 1 GHz)		25
Radiated Electric Field Emissions(Above 1 GHz).....		26
EUT External Photographs.....		27
EUT Internal Photographs		28

This report shall not be reproduced except in full, without the written approval of KES Co., Ltd.
The results shown in this test report refer only to the sample(s) tested unless otherwise stated.
The authenticity of the test report, contact shchoi@kes.co.kr



KES Co., Ltd.

3701, 40, Simin-daero 365beon-gil,
Dongan-gu, Anyang-si, Gyeonggi-do, 14057, Korea
Tel: +82-31-425-6200 / Fax: +82-31-424-0450
www.kes.co.kr

Report No.:

KES-EM-20T0030

Page (4) of (34)

1.0 General Product Description

Main Specifications of EUT are:

Video	
Imaging Device	43.3mm Full-frame CMOS
Effective Pixels	7680(H)x4320(V)
NETD	None
Pixel Size	None
Min. Illumination	Color : 0.015Lux(F1.4, 1/30sec) B/W : 0.0015Lux(F1.4, 1/30sec)
Video Out	HDMI: 1080p@30fps
Lens	
Focal Length (Zoom Ratio)	None
Max. Aperture Ratio	None
Angular Field of View	Canon 24mm f1.4L, Auto-Iris (EF 24mm f/1.4 II USM) : Horizontal field of view: 8K 57.4° Canon 35mm f1.4L, Auto-Iris (EF 35mm f/1.4 II USM) : Horizontal field of view: 8K 42.6° Canon 50mm f1.4, Auto-Iris (EF 50mm f/1.4 USM) : Horizontal field of view: 8K 30.9° Canon 85mm f1.2L, Auto-Iris (EF 85mm f/1.2 II USM) : Horizontal field of view: 8K 19.1° Canon 100mm f2.0, Auto-Iris (EF 100mm f/2 USM) : Horizontal field of view: 8K 16.0° Canon 70-200mm f2.8L, Auto-Iris, Vari Focal (EF 70-200mm f/2.8L USM) : Horizontal field of view: 8K 22.8° ~ 8.0° <i>* When using Canon 70-200mm f2.8L, Auto-Iris, Vari Focal (EF 70-200mm f/2.8L USM) mount lens, housing accessory components must be used.</i>
Min. Object Distance	None
Focus Control	Autofocus
Lens Type	Canon EF mount Lens
Mount Type	Canon EF mount
Optional Lens	Canon 24mm f1.4L, Auto-Iris (EF 24mm f/1.4 II USM) Canon 35mm f1.4L, Auto-Iris (EF 35mm f/1.4 II USM) Canon 50mm f1.4, Auto-Iris (EF 50mm f/1.4 USM) Canon 85mm f1.2L, Auto-Iris (EF 85mm f/1.2 II USM) Canon 100mm f2.0, Auto-Iris (EF 100mm f/2 USM) Canon 70-200mm f2.8L, Auto-Iris, Vari Focal (EF 70-200mm f/2.8L USM)
Pan / Tilt / Rotate	
Pan / Tilt / Rotate Range	None
Pan Range	None
Pan Speed	None
Tilt Range	None
Tilt Speed	None
Rotate Range	None
Sequence	None
Preset Accuracy	None
Azimuth	None
Auto Tracking	None
Operational	
IR Viewable Length	None
Camera Title	Displayed up to 75 characters
Day & Night	Auto(ICR)
Backlight Compensation	BLC, DWDR
Wide Dynamic Range	None
Digital Noise Reduction	SSNRV
Digital Image Stabilization	None
Defog	None
Motion Detection	8ea, 8point polygonal zones (in 8K resolution only)
Privacy Masking	6ea, Rectangular - Color: Grey/Green/Red/Blue/Black/White
Gain Control	Low / Middle / High
White Balance	ATW / AWC / Manual / Indoor / Outdoor
LDC	None
Electronic Shutter Speed	Minimum / Maximum / Anti flicker (1/5 ~ 1/12,000sec)
Digital PTZ	Support
Video Rotation	None

This report shall not be reproduced except in full, without the written approval of KES Co., Ltd.
The results shown in this test report refer only to the sample(s) tested unless otherwise stated.
The authenticity of the test report, contact shchoi@kes.co.kr



KES Co., Ltd.

3701, 40, Simin-daero 365beon-gil,
Dongan-gu, Anyang-si, Gyeonggi-do, 14057, Korea
Tel: +82-31-425-6200 / Fax: +82-31-424-0450
www.kes.co.kr

Report No.:

KES-EM-20T0030

Page (5) of (34)

Analytics	- Classified object type : Person/Face/Vehicle/License plate with attributes, BestShot per object - Analytics events based on AI engine : object detection, Directional detection, Enter/Exit, Loitering, Virtual line - Analytics events : Defocus detection, Motion detection, Appear/Disappear, Tampering, Audio detection, Sound classification
Business Intelligence	None
Serial Interface	RS-485(Samsung-T, Pelco-D/P)
Alarm I/O	Input 1ea / Output 1ea
Alarm Triggers	Analytics, Network disconnect, Alarm input
Alarm Events	File upload via FTP and e-mail Notification via e-mail SD/SDHC/SDXC or NAS recording at event triggers Alarm output Handover
Audio In	Selectable(mic in/line in) Supply voltage: 2.5VDC(4mA), Input impedance: 2K Ohm
Audio Out	Line out, Max.output level: 1Vrms
IR Illuminator (Optional)	None
Wiper	None
Coaxial Protocol	None
Video Transmission Distance	None
Radiometry	
Temperature detect range	None
Temperature accuracy	None
Temperature detection	None
Additional	None
Network	
Ethernet	RJ-45(10/100/1000 BASE-T), SFP slot(100/1000Mbps)
Video Compression	H.265/H.264: Main/High, MJPEG
Resolution	7680x4320, 7360x4128, 6016x3384, 6016x4008, 5472x3648, 4768x3184, 4608x2592, 3840x2160, 1920x1080, 1280x1024, 1280x960, 1280x720, 1024x768, 800x600, 800x448, 720x576, 720x480, 640x480, 640x360
Max. Framerate	H.265/H.264: 8K @ Max. 15fps (Mode 0) : Available in Dec. 2019 H.265/H.264: 24MP @ Max. 20fps (Mode 1) : Available in Mar. 2020 H.265/H.264: 15MP @ Max. 30fps (Mode 2) : Available in Mar. 2020 H.265/H.264: 4K @ Max. 60fps (Mode 3) : Available in Mar. 2020
Smart Codec	WiseStreamII
Video Quality Adjustment	H.264/H.265: Target bitrate level control MJPEG: Target bitrate level control
Bitrate Control	H.264/H.265: CBR or VBR MJPEG: VBR
Streaming	Unicast(10 users) / Multicast Multiple streaming(Up to 3 profiles)
Audio Compression	G.711 u-law /G.726 Selectable G.726(ADPCM) 8KHz, G.711 8KHz G.726: 16Kbps, 24Kbps, 32Kbps, 40Kbps AAC-LC: 48Kbps at 16KHz
Protocol	IPv4, IPv6, TCP/IP, UDP/IP, RTP(UDP), RTP(TCP), RTCP,RTSP, NTP, HTTP, HTTPS, SSL/TLS, DHCP, FTP, SMTP, ICMP, IGMP, SNMPv1/v2c/v3(MIB-2), ARP, DNS, DDNS, QoS, UPnP, Bonjour, LLDP
Security	HTTPS(SSL) Login Authentication Digest Login Authentication IP Address Filtering User access log 802.1X Authentication(EAP-TLS, EAP-LEAP) Device Certificate(Hanwha Techwin Root CA)
Edge Storage	Micro SD/SDHC/SDXC 1slot 256MB
Application Programming Interface	ONVIF Profile S/G/T SUNAPI(HTTP API)
Webpage Language	English, Korean, Chinese, French, Italian, Spanish, German, Japanese, Russian, Swedish,, Portuguese, Czech, Polish, Turkish, Dutch, Hungarian, Greek
Web Viewer	Supported OS: Windows 8.1, 10, Mac OS X 10.10, 10.11, 10.12 Recommended Browser: Google Chrome Supported Browser: MS Explore11, MS Edge, Mozilla Firefox(Window 64bit only), Apple Safari(Mac OS X only)
Memory	4096MB RAM, 512MB Flash

This report shall not be reproduced except in full, without the written approval of KES Co., Ltd.
The results shown in this test report refer only to the sample(s) tested unless otherwise stated.
The authenticity of the test report, contact shchoi@kes.co.kr

**KES Co., Ltd.**

3701, 40, Simin-daero 365beon-gil,
Dongan-gu, Anyang-si, Gyeonggi-do, 14057, Korea
Tel: +82-31-425-6200 / Fax: +82-31-424-0450
www.kes.co.kr

Report No.:
KES-EM-20T0030
Page (6) of (34)

Environmental	
Operating Temperature / Humidity	0°C ~ +45°C(32°F ~ +122°F) / Less than 90% RH
Storage Temperature / Humidity	-40°C ~ +65°C(-40°F ~ +149°F) / Less than 90% RH
Certification	EMC EN 50130-4, EN 55032 Class A, EN 61000-6-3, EN 61000-3-2, EN 61000-3-3, EN 61000-6-1, FCC Part 15 Subpart B Class A, IC ICES-003 Class A, Safety UL 60950-1
Electrical	
Input Voltage	HPoE(IEEE802.3bt, Class5), 12VDC
Power Consumption	PoE: Max 30W, typical 20W 12VDC: Max 26W, typical 18W
Mechanical	
Color / Material	Black / Aluminum
RAL Code	None
Product dimensions / weight	120(W)x118.1(H)x179(D)mm, 2.1Kg(4.55 lb)
Package dimensions / weight	250(W)x250(D)x323(H)mm, 3.8Kg(8.38 lb)
Conduit hole	None
Hanging mount(Dome)	
Skin cover(Dome)	
Weather cap(Dome)	
Power module	
Backbox	

This report shall not be reproduced except in full, without the written approval of KES Co., Ltd.
The results shown in this test report refer only to the sample(s) tested unless otherwise stated.
The authenticity of the test report, contact shchoi@kes.co.kr



1.1 Test Voltage & Frequency

Unless indicated otherwise on the individual data sheet or test results, the test voltage and frequency was as indicated below.

Voltage ☐ 230 Vac ☒ 120 Vac ☐ 24 Vac ☒ 12 Vdc ☐ PoE

Frequency ☐ 50 Hz ☒ 60 Hz ☐ Hz

1.2 Variant Model Differences

Not applicable

1.3 Device Modifications

Not applicable

1.4 Equipment Under Test

Description	Model Number	Serial Number	Manufacturer	Remarks
Network Camera	TNB-9000	-	HANWHA TECHWIN (TIANJIN) CO., LTD	EUT
PoE Adapter	PT-PSE109GBRO- AH	PT1941220063	Dongguan PROCET Network Technology Co.,Ltd	EUT

**KES Co., Ltd.**

3701, 40, Simin-daero 365beon-gil,
Dongan-gu, Anyang-si, Gyeonggi-do, 14057, Korea
Tel: +82-31-425-6200 / Fax: +82-31-424-0450
www.kes.co.kr

Report No.:
KES-EM-20T0030
Page (8) of (34)

1.5 Support Equipments

Description	Model Number	Serial Number	Manufacturer	Remarks
Notebook	P95G001	8KM8HT2	Wistron Infocom (Chengdu) Company Limited	-
Notebook Adapter	LA65NS2-01	-	LITE-ON TECHNOLOGY(CHANG ZHOU)CO.,LTD.	-
Controller	SPC-1010	C50E67WG10100F	SamSung Techwin Co.,Ltd.	-
Controller Adapter	RS-AB1000	-	Dongguan Jinhua Sheng Power Technology Co.,Ltd.	-
Speaker	BR1000A Cuve Black 2	-	DONGGUAN EDIFIER TECHNOLOGY Co., Ltd	-
MIC	MP1000	-	-	-
Alarm	SIP-1201DD D0	-	SAMSUNG TECHWIN CO., LTD.	-
Button Alarm	-	-	-	-
iPod	A1367	C3TDG2JGDCP9	APPLE .Inc	-
Micro SD Card	-	-	SanDisk	8 GB
Monitor	27UK850	805NTGYCH455	LG Electronics Inc.	-
Monitor Adapter	A16-140P1A	ZJ5CS64929301C304	LG Electronics Inc.	-

This report shall not be reproduced except in full, without the written approval of KES Co., Ltd.
The results shown in this test report refer only to the sample(s) tested unless otherwise stated.
The authenticity of the test report, contact shchoi@kes.co.kr



1.6 External I/O Cabling

■ DC 12 V Mode

Start		END		Cable Spec.	
Description	I/O Port	Description	I/O Port	Length	Shield
Network Camera (EUT)	Micro HDMI	Monitor	HDMI	1.0	S
	NETWORK	Notebook	RJ-45	30	S
	RS-485	Controller	RS-485	3.0	U
	Audio Out	Speaker	3.5 mm	1.4	U
	Audio In	MIC	XLR	1.4	U
	Alarm Out	Alarm	Alarm In	3.0	U
	Alarm In	Button Alarm	Alarm Out	3.0	U
	SLOT	Micro SD Card	SLOT	-	-
Notebook	3.5 mm	iPod	3.5 mm	1.0	U

■ PoE Mode

Start		END		Cable Spec.	
Description	I/O Port	Description	I/O Port	Length	Shield
Network Camera (EUT)	Micro HDMI	Monitor	HDMI	1.0	
	NETWORK	PoE Adapter	RJ-45	30	S
	RS-485	Controller	RS-485	3.0	U
	Audio Out	Speaker	3.5 mm	1.4	U
	Audio In	MIC	XLR	1.4	U
	Alarm Out	Alarm	Alarm In	3.0	U
	Alarm In	Button Alarm	Alarm Out	3.0	U
	SLOT	Micro SD Card	SLOT	-	-
Notebook	3.5 mm	iPod	3.5 mm	1.0	U
	RJ-45	PoE Adapter	RJ-45	30	S

* Unshielded=U, Shielded=S



KES Co., Ltd.

3701, 40, Simin-daero 365beon-gil,
Dongan-gu, Anyang-si, Gyeonggi-do, 14057, Korea
Tel: +82-31-425-6200 / Fax: +82-31-424-0450
www.kes.co.kr

Report No.:
KES-EM-20T0030
Page (10) of (34)

1.7 EUT Operating Mode(s)

Test mode	operating
DC 12 V, PoE	Monitoring EUT Using Web Viewer, Ping Test

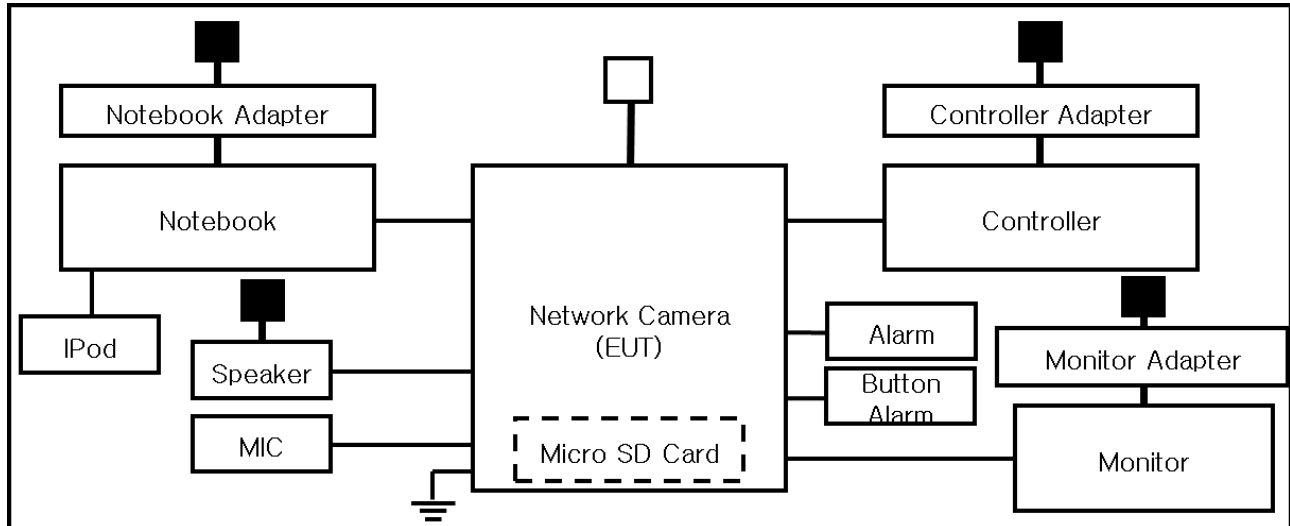
EUT Test operating S/W		
Name	Version	Manufacture Company
Web Viewer	-	-

This report shall not be reproduced except in full, without the written approval of KES Co., Ltd.
The results shown in this test report refer only to the sample(s) tested unless otherwise stated.
The authenticity of the test report, contact shchoi@kes.co.kr

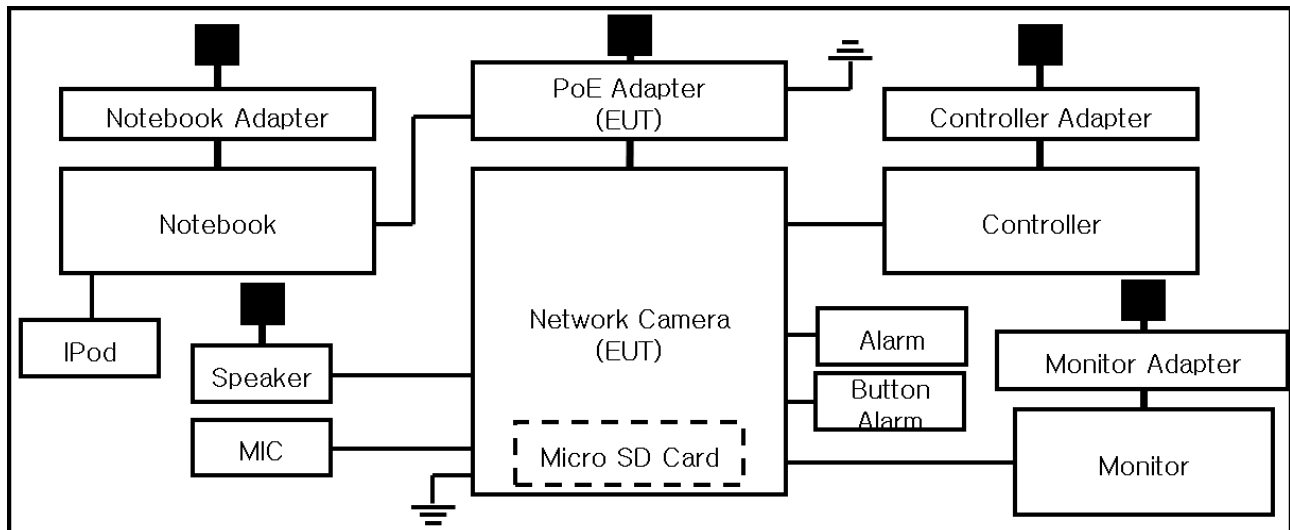
1.8 Configuration

■ AC Main
 □ DC Main

■ DC 12 V Mode



■ PoE Mode



1.9 Remarks when standards applied

USB and SFP ports are for administrators and is excluded from the test.







1.10 Calibration Details of Equipment Used for Measurement

Test equipment and test accessories are calibrated on regular basis. The maximum time between calibrations is one year or what is recommended by the manufacturer, whichever is less.

1.11 Test Facility

The measurement facility is located at 473-21 Gayeo-ro, Yeosu-si, Gyeonggi-do, 12658, Korea. The sites are constructed in conformance with the requirements of ANSI C63.4:2014 and CISPR 16-1-4:2012

1.12 Laboratory Accreditations and Listings

Country	Agency	Scope of Accreditation	Logo
KOREA	RRA	EMI (3 m & 10 m Semi-Anechoic Chamber , 10 m Open Area and conducted test site) EMS (ESD, RS, EFT/Burst, Surge, CS, Magnetic, Dips and interruptions)	 KR0100
International	KOLAS	EMI (3 m & 10 m Semi-Anechoic Chamber , and conducted test site) EMS (ESD, RS, EFT/Burst, Surge, CS, Magnetic, Dips and interruptions)	 KT489
USA	FCC	3 m & 10 m Semi-Anechoic Chamber, 10 m Open Area and Conducted test site to perform FCC Part 15/18 measurements.	 KR0100
Canada	ISED	3 m & 10 m Semi-Anechoic Chamber and Conducted test site	 23298-1
JAPAN	VCCI	Mains Ports Conducted Interference Measurement, Telecommunication Ports Conducted Disturbance Measurement and Radiation 10 meter site, Facility for measuring radiated disturbance above 1 GHz	 R-20056, C-20036, T-20040, G-20057
Europe	TÜV SÜD	EMI (3 m & 10 m Semi-Anechoic Chamber , 10 m Open Area and conducted test site) EMS (ESD, RS, EFT/Burst, Surge, CS, Magnetic, Dips and interruptions)	 CARAT 001633 0003

2.0 Test Regulations

The emissions tests were performed according to following regulations:

☐ **EMC – Directive 2014/30/EU**

☐ EN 61000-6-3:2011

☐ EN 61000-6-1:2007

☐ EN 61000-6-4:2007 +A1:2011

☐ EN 61000-6-2:2005

☐ EN 55011:2007 +A1:2010

☐ Group 1
☐ Class A

☐ Group 2
☐ Class B

☐ EN 55014-1:2006 +A2:2011

☐ EN 55014-2:1997 +A2:2008

☐ EN 55015:2013

☐ EN 55032:2015

☐ Class A

☐ Class B

☐ EN 55024:2010

☐ EN 50130-4:2011 +A1:2014

☐ EN 61000-3-2:2014

☐ EN 61000-3-3:2013

☐ EN 61326-1:2013



KES Co., Ltd.

3701, 40, Simin-daero 365beon-gil,
Dongan-gu, Anyang-si, Gyeonggi-do, 14057, Korea
Tel: +82-31-425-6200 / Fax: +82-31-424-0450
www.kes.co.kr

Report No.:
KES-EM-20T0030
Page (14) of (34)

- | | | |
|--|---|----------------------------------|
| <input type="checkbox"/> VCCI-CISPR 32:2016 | <input type="checkbox"/> Class A | <input type="checkbox"/> Class B |
| <input type="checkbox"/> AS/NZS CISPR32:2015 | <input type="checkbox"/> Class A | <input type="checkbox"/> Class B |
| <input checked="" type="checkbox"/> 47 CFR Part 15, Subpart B | | |
| <input type="checkbox"/> CISPR 22:2009 +A1:2010 | <input type="checkbox"/> Class A | <input type="checkbox"/> Class B |
| <input checked="" type="checkbox"/> ANSI C63.4-2014 | <input checked="" type="checkbox"/> Class A | <input type="checkbox"/> Class B |
| <input checked="" type="checkbox"/> IC Regulation ICES-003 : 2016 | | |
| <input type="checkbox"/> CAN/CSA CISPR 22-10 | <input type="checkbox"/> Class A | <input type="checkbox"/> Class B |
| <input checked="" type="checkbox"/> ANSI C63.4-2014 | <input checked="" type="checkbox"/> Class A | <input type="checkbox"/> Class B |
| <input type="checkbox"/> RE- Directive 2014/53/EU | | |
| <input type="checkbox"/> EN 301 489-1 V1.9.2 | | |
| <input type="checkbox"/> Equipment for fixed use | | |
| <input type="checkbox"/> Equipment for vehicular use | | |
| <input type="checkbox"/> Equipment for portable use | | |
| <input type="checkbox"/> EN 301 489-3 V1.6.1 | | |
| <input type="checkbox"/> EN 301 489-17 V2.2.1 | | |
| <input type="checkbox"/> EN 60945:2002 | | |

This report shall not be reproduced except in full, without the written approval of KES Co., Ltd.
The results shown in this test report refer only to the sample(s) tested unless otherwise stated.
The authenticity of the test report, contact shchoi@kes.co.kr



2.1 Conducted Emissions at Mains Power Ports

Test Date

Jan. 08, 2020

Test Location

Electro wave Shieldroom #6

Test Equipment

Used	Description	Model Number	Manufacturer	Serial Number	Cal. Due
<input checked="" type="checkbox"/>	EMI Test S/W	EMC32	R & S	9.12.00	-
<input checked="" type="checkbox"/>	EMI TEST RECEIVER	ESR3	R & S	101783	04, 22, 2020
<input checked="" type="checkbox"/>	LISN	ENV216	R & S	101786	01, 25, 2020
<input checked="" type="checkbox"/>	LISN	ENV216	R & S	101137	01, 25, 2020
<input type="checkbox"/>	LISN	NNBM8124	SCHWARZBECK	8124-1002	08, 06, 2020

Test Conditions

Temperature: 25,8 °C
Relative Humidity: 48,4 % R.H.

Frequency Range of Measurement

150 kHz to 30 MHz

Instrument Settings

IF Band Width: 9 kHz

Test Results

The requirements are:

- ☒ PASS
☐ NOT PASS
☐ NOT APPLICABLE

Remarks

See Appendix A for test data.

**KES Co., Ltd.**

3701, 40, Simin-daero 365beon-gil,
Dongan-gu, Anyang-si, Gyeonggi-do, 14057, Korea
Tel: +82-31-425-6200 / Fax: +82-31-424-0450
www.kes.co.kr

Report No.:

KES-EM-20T0030

Page (16) of (34)

2.2 Radiated Electric Field Emissions(Below 1 GHz)

Test Date

Jan. 08, 2020

Test Location☐ OPEN AREA TEST SITE #2 ☒ SEMI ANECHOIC CHAMBER #4(10 m)**Test Equipment**

Used	Description	Model Number	Manufacturer	Serial Number	Cal. Due
<input checked="" type="checkbox"/>	EMI Test S/W	EP5/RE	TOYO Corporation	6.0.0	-
<input checked="" type="checkbox"/>	EMI TEST RECEIVER	ESU26	R & S	100551	04, 09, 2020
<input checked="" type="checkbox"/>	AMPLIFIER	SCU 01	R & S	100603	11, 25, 2020
<input checked="" type="checkbox"/>	TRILOG-BROADBAND ANTENNA	VULB9163	Schwarzbeck	715	11, 29, 2020
<input checked="" type="checkbox"/>	ATTENUATOR	8491A	HP	32173	03, 11, 2020

Test Conditions

Temperature: 24,6 °C
Relative Humidity: 47,2 % R.H.

Frequency Range of Measurement

30 MHz to 1 GHz

Instrument Settings

IF Band Width: 120 kHz

Test Results

The requirements are:

- ☒ PASS
☐ NOT PASS
☐ NOT APPLICABLE

RemarksSee Appendix A for test data.

This report shall not be reproduced except in full, without the written approval of KES Co., Ltd.
The results shown in this test report refer only to the sample(s) tested unless otherwise stated.
The authenticity of the test report, contact shchoi@kes.co.kr

2.3 Radiated Electric Field Emissions(Above 1 GHz)

Test Date

Jan. 08, 2020

Test Location

SEMI ANECHOIC CHAMBER #4(10 m)

Test Equipment

Used	Description	Model Number	Manufacturer	Serial Number	Cal. Due
<input checked="" type="checkbox"/>	EMI Test S/W	EP5/RE	TOYO Corporation	6.0.0	-
<input checked="" type="checkbox"/>	EMI TEST RECEIVER	ESU26	R & S	100551	04, 09, 2020
<input checked="" type="checkbox"/>	PREAMPLIFIER	8449B	AGILENT	3008A01742	01, 02, 2021
<input type="checkbox"/>	ATTENUATOR	8491A	HP	35496	03, 11, 2020
<input checked="" type="checkbox"/>	HORN ANTENNA	BBHA 9120D	SCHWARZBECK	9120D-1802	12, 13, 2020

Test Conditions

Temperature: 25,2 °C
Relative Humidity: 45,3 % R.H.

Frequency Range of Measurement

1 GHz to 5 GHz

Instrument Settings

IF Band Width: 1 MHz

Test Results

The requirements are:

- ☒ PASS
☐ NOT PASS
☐ NOT APPLICABLE

Remarks

See Appendix A for test data.

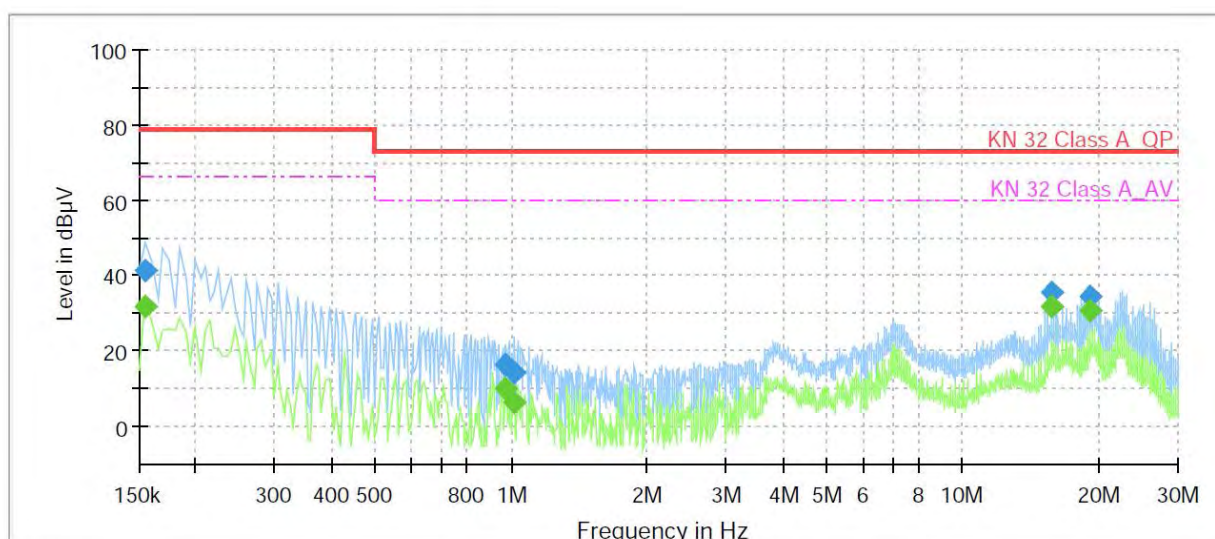
APPENDIX A – TEST DATA

Conducted Emissions at Mains Power Ports

HOT LINE

Common Information

Test Description: Conducted Emission
 Model No.: TNB-9000
 Mode: L1
 Operator Name: KES



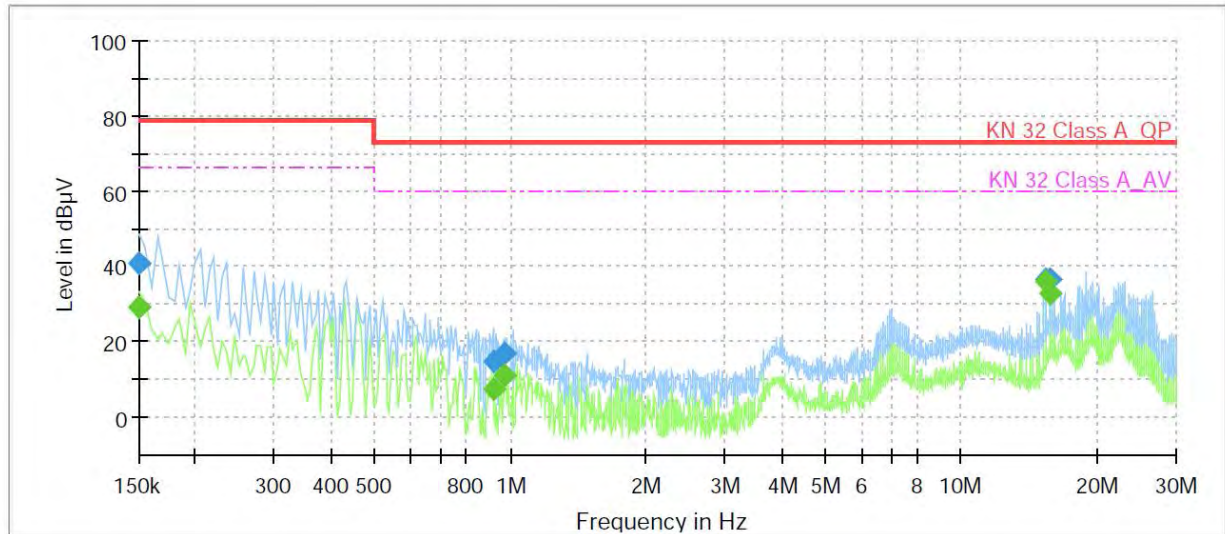
Final Result

Frequency (MHz)	QuasiPeak (dBμV)	CAverage (dBμV)	Limit (dBμV)	Margin (dB)	Meas. Time (ms)	Bandwidth (kHz)	Line	Corr. (dB)
0.155000	---	31.98	66.00	34.02	1000.0	9.000	L1	9.9
0.155000	41.49	---	79.00	37.51	1000.0	9.000	L1	9.9
0.975000	---	9.93	60.00	50.07	1000.0	9.000	L1	11.4
0.975000	16.21	---	73.00	56.79	1000.0	9.000	L1	11.4
1.020000	---	6.17	60.00	53.83	1000.0	9.000	L1	11.3
1.020000	14.29	---	73.00	58.71	1000.0	9.000	L1	11.3
15.690000	---	31.90	60.00	28.10	1000.0	9.000	L1	10.6
15.690000	35.64	---	73.00	37.36	1000.0	9.000	L1	10.6
19.120000	---	30.59	60.00	29.41	1000.0	9.000	L1	10.8
19.120000	34.23	---	73.00	38.77	1000.0	9.000	L1	10.8

NEUTRAL LINE

Common Information

Test Description: Conducted Emission
 Model No.: TNB-9000
 Mode: N
 Operator Name: KES



Final Result

Frequency (MHz)	QuasiPeak (dBμV)	CAverage (dBμV)	Limit (dBμV)	Margin (dB)	Meas. Time (ms)	Bandwidth (kHz)	Line	Corr. (dB)
0.150000	---	29.30	66.00	36.70	1000.0	9.000	N	9.9
0.150000	40.92	---	79.00	38.08	1000.0	9.000	N	9.9
0.915000	---	7.56	60.00	52.44	1000.0	9.000	N	11.4
0.915000	15.07	---	73.00	57.93	1000.0	9.000	N	11.4
0.975000	---	11.29	60.00	48.71	1000.0	9.000	N	11.4
0.975000	16.92	---	73.00	56.08	1000.0	9.000	N	11.4
15.440000	---	36.01	60.00	23.99	1000.0	9.000	N	10.6
15.440000	36.70	---	73.00	36.30	1000.0	9.000	N	10.6
15.685000	---	32.65	60.00	27.35	1000.0	9.000	N	10.6
15.685000	36.47	---	73.00	36.53	1000.0	9.000	N	10.6

◆ Calculation

QuasiPeak[dBuV] / CAverage [dBuV] = Reading Value[dBuV] + Corr. [dB]

QuasiPeak / CAverage : The Final Value

Reading Value : Not shown in the table.

Corr. : Correction values (LISN FACTOR + (Cable Loss + Pulse Limiter FACTOR))



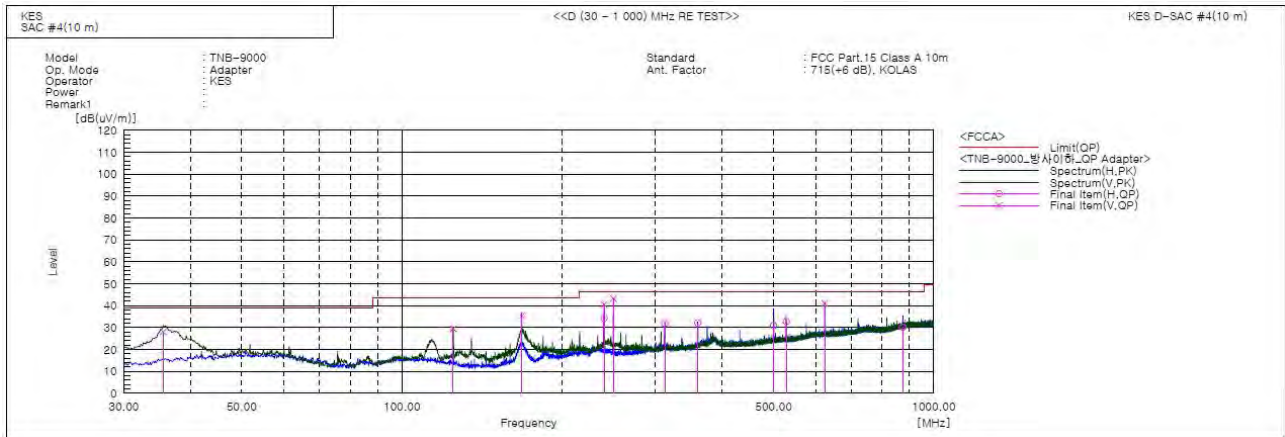
KES Co., Ltd.

3701, 40, Simin-daero 365beon-gil,
Dongan-gu, Anyang-si, Gyeonggi-do, 14057, Korea
Tel: +82-31-425-6200 / Fax: +82-31-424-0450
www.kes.co.kr

Report No.:
KES-EM-20T0030
Page (20) of (34)

Radiated Electric Field Emissions(Below 1 GHz)

■ DC 12 V Mode



Final Result

No.	Frequency [MHz]	(P)	Reading QP [dB(uV)]	c.f [dB(1/m)]	Result QP [dB(uV/m)]	Limit QP [dB(uV/m)]	Margin QP [dB]	Height [cm]	Angle [deg]	Remark
1	35.578	V	52.9	-24.8	28.1	39.0	10.9	100.0	261.0	
2	124.939	V	54.2	-24.7	29.5	43.5	14.0	100.0	356.0	
3	167.983	V	59.9	-24.5	35.4	43.5	8.1	100.0	357.0	
4	240.005	V	60.6	-20.1	40.5	46.5	6.0	100.0	22.0	
5	240.005	H	54.4	-20.1	34.3	46.5	12.2	400.0	122.0	
6	249.948	V	63.3	-20.0	43.3	46.5	3.2	100.0	18.0	
7	312.028	H	49.9	-18.0	31.9	46.5	14.6	244.0	281.0	
8	359.921	H	48.3	-16.1	32.2	46.5	14.3	226.0	289.0	
9	499.965	H	43.6	-12.7	30.9	46.5	15.6	238.0	265.0	
10	527.974	H	45.0	-12.3	32.7	46.5	13.8	100.0	109.0	
11	624.004	V	50.5	-9.5	41.0	46.5	5.5	400.0	359.0	
12	875.113	H	36.2	-6.0	30.2	46.5	16.3	400.0	282.0	

This report shall not be reproduced except in full, without the written approval of KES Co., Ltd.
The results shown in this test report refer only to the sample(s) tested unless otherwise stated.
The authenticity of the test report, contact shchoi@kes.co.kr

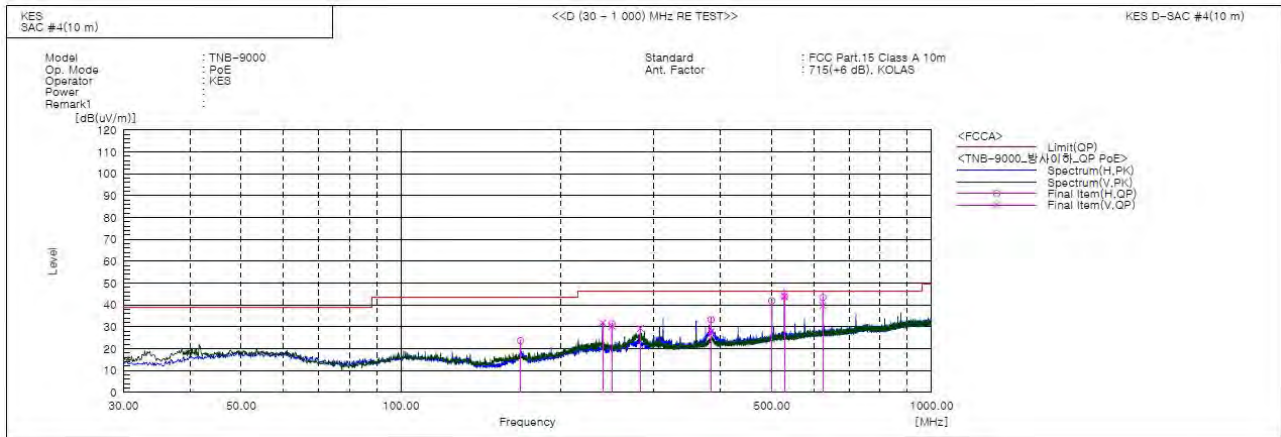


KES Co., Ltd.

3701, 40, Simin-daero 365beon-gil,
Dongan-gu, Anyang-si, Gyeonggi-do, 14057, Korea
Tel: +82-31-425-6200 / Fax: +82-31-424-0450
www.kes.co.kr

Report No.:
KES-EM-20T0030
Page (21) of (34)

■ PoE Mode



Final Result

No.	Frequency	(P)	Reading	c.f	Result	Limit	Margin	Height	Angle	Remark
	[MHz]		QP		QP	QP	QP			
			[dB(uV)]	[dB(1/m)]	[dB(uV/m)]	[dB(uV/m)]	[dB]	[cm]	[deg]	
1	167.983	H	48.2	-24.5	23.7	43.5	19.8	400.0	90.0	
2	240.005	V	52.0	-20.1	31.9	46.5	14.6	100.0	350.0	
3	249.948	H	51.3	-20.0	31.3	46.5	15.2	400.0	209.0	
4	249.948	V	50.3	-20.0	30.3	46.5	16.2	134.0	274.0	
5	282.564	V	48.7	-19.4	29.3	46.5	17.2	100.0	147.0	
6	384.050	H	48.8	-15.5	33.3	46.5	13.2	290.0	88.0	
7	384.050	V	43.3	-15.5	27.8	46.5	18.7	100.0	131.0	
8	499.965	H	54.6	-12.7	41.9	46.5	4.6	226.0	120.0	
9	527.974	H	56.2	-12.3	43.9	46.5	2.6	233.0	100.0	
10	527.974	V	56.3	-12.3	44.0	46.5	2.5	100.0	238.0	
11	624.004	H	53.0	-9.5	43.5	46.5	3.0	268.0	247.0	
12	624.004	V	49.2	-9.5	39.7	46.5	6.8	111.0	150.0	

◆ Calculation - SAC #4(10 m)

Result(QP) [dB(μ V/m)] = (Reading(QP)[dB(μ V)] + c.f[dB(1/m)])

Margin(QP)[dB] = Limit[dB(μ V/m)] - Result(QP) [dB(μ V/m)]

Reading(QP) : Reading value, Result(QP) : Reading value + Factor value

Limit(QP) : Limit value, c.f : (ANT Factor + Cable Loss - Preamp Factor), Margin: Margin value

This report shall not be reproduced except in full, without the written approval of KES Co., Ltd.
The results shown in this test report refer only to the sample(s) tested unless otherwise stated.
The authenticity of the test report, contact shchoi@kes.co.kr



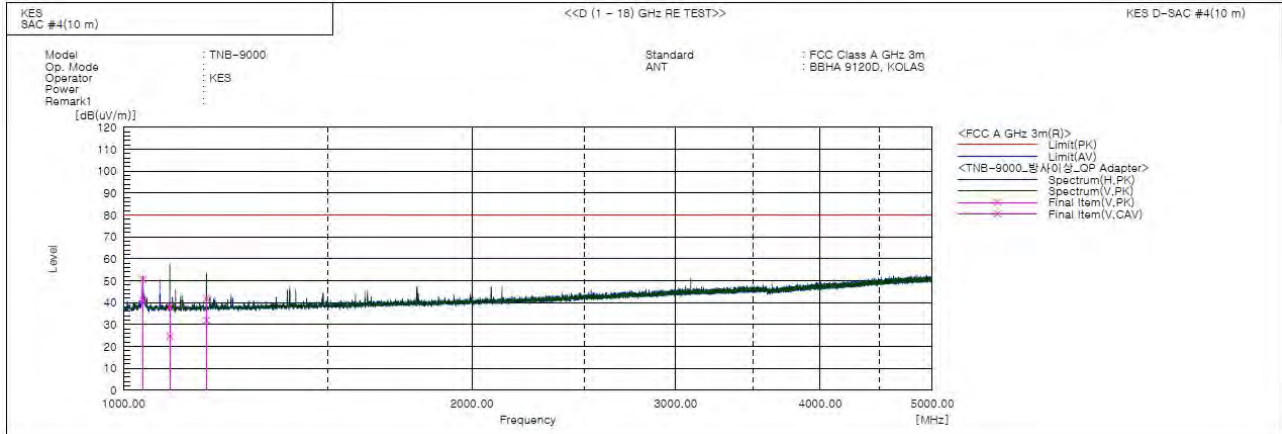
KES Co., Ltd.

3701, 40, Simin-daero 365beon-gil,
Dongan-gu, Anyang-si, Gyeonggi-do, 14057, Korea
Tel: +82-31-425-6200 / Fax: +82-31-424-0450
www.kes.co.kr

Report No.:
KES-EM-20T0030
Page (22) of (34)

Radiated Electric Field Emissions(Above 1 GHz)

■ DC 12 V Mode



Final Result

No.	Frequency [MHz]	(P)	Reading PK [dB(uV)]	Reading CAV [dB(uV)]	c.f [dB(1/m)]	Result PK [dB(uV/m)]	Result CAV [dB(uV/m)]	Limit PK [dB(uV/m)]	Limit AV [dB(uV/m)]	Margin PK [dB]	Margin CAV [dB]	Height [cm]	Angle [deg]	Remark
1	1039.435	V	56.1	46.5	-5.4	50.7	41.1	80.0	60.0	29.3	18.9	100.0	130.0	
2	1039.500	H	58.5	49.0	-5.4	53.1	43.6	80.0	60.0	26.9	16.4	100.0	311.0	
3	1075.000	H	44.0	30.4	-5.1	38.9	25.3	80.0	60.0	41.1	34.7	400.0	53.0	
4	1096.500	V	43.1	29.7	-5.0	38.1	24.7	80.0	60.0	41.9	35.3	100.0	122.0	
5	1179.500	V	46.4	36.4	-4.5	41.9	31.9	80.0	60.0	38.1	28.1	100.0	53.0	

This report shall not be reproduced except in full, without the written approval of KES Co., Ltd.
The results shown in this test report refer only to the sample(s) tested unless otherwise stated.
The authenticity of the test report, contact shchoi@kes.co.kr

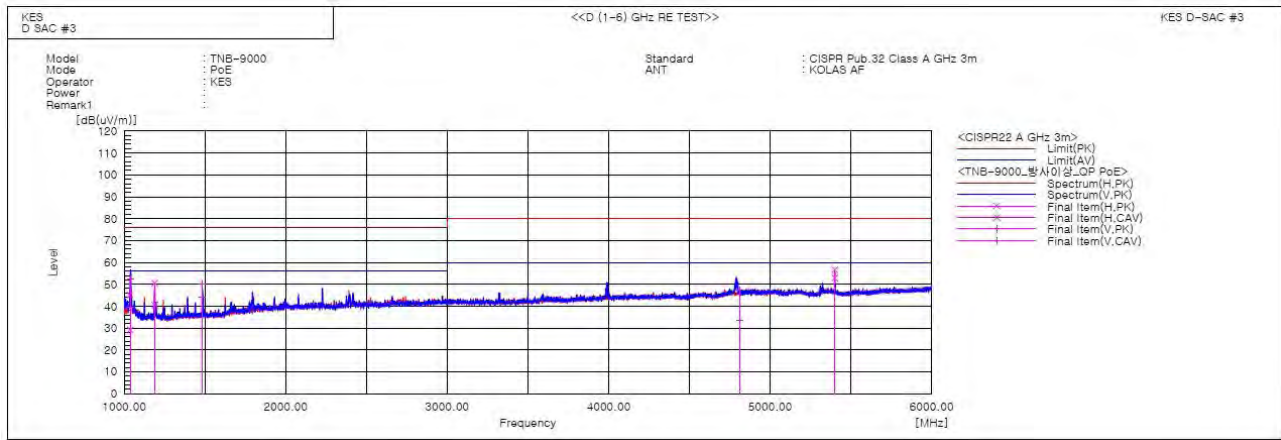


KES Co., Ltd.

3701, 40, Simin-daero 365beon-gil,
Dongan-gu, Anyang-si, Gyeonggi-do, 14057, Korea
Tel: +82-31-425-6200 / Fax: +82-31-424-0450
www.kes.co.kr

Report No.:
KES-EM-20T0030
Page (23) of (34)

PoE Mode



Final Result

No.	Frequency [MHz]	(P)	Reading PK [dB(uV)]	Reading CAV [dB(uV)]	c.f [dB(1/m)]	Result PK [dB(uV/m)]	Result CAV [dB(uV/m)]	Limit PK [dB(uV/m)]	Limit AV [dB(uV/m)]	Margin PK [dB]	Margin CAV [dB]	Height [cm]	Angle [deg]	Remark
1	1040.220	V	61.9	48.6	-9.3	52.6	39.3	76.0	56.0	23.4	16.7	100.0	351.9	
2	1036.750	H	54.4	38.5	-9.3	45.1	29.2	76.0	56.0	30.9	26.8	100.0	355.2	
3	1188.100	H	59.1	49.2	-8.6	50.5	40.6	76.0	56.0	25.5	15.4	100.0	91.0	
4	1484.920	V	56.6	50.9	-6.6	50.0	44.3	76.0	56.0	26.0	11.7	100.0	16.1	
5	4810.206	V	39.9	26.0	7.6	47.5	33.6	80.0	60.0	32.5	26.4	100.0	160.6	
6	5399.900	H	48.7	44.9	7.9	56.6	52.8	80.0	60.0	23.4	7.2	100.0	4.3	

Calculation

Result(PK/CAV) [dB(uV/m)] = (Reading(PK/CAV)[dB(uV)] + c.f[dB(1/m)])

Margin(PK/CAV)[dB] = Limit[dB(uV/m)] - Result(PK/CAV) [dB(uV/m)]

Reading(PK/CAV) : Reading value, Result(PK/CAV) : Reading value + Factor value

Limit(QP) : Limit value, c.f : (ANT Factor + Cable Loss - Preamp Factor), Margin: Margin value

This report shall not be reproduced except in full, without the written approval of KES Co., Ltd.
The results shown in this test report refer only to the sample(s) tested unless otherwise stated.
The authenticity of the test report, contact shchoi@kes.co.kr

Test Setup Photos and Configuration

Conducted Emissions at Mains Power Ports



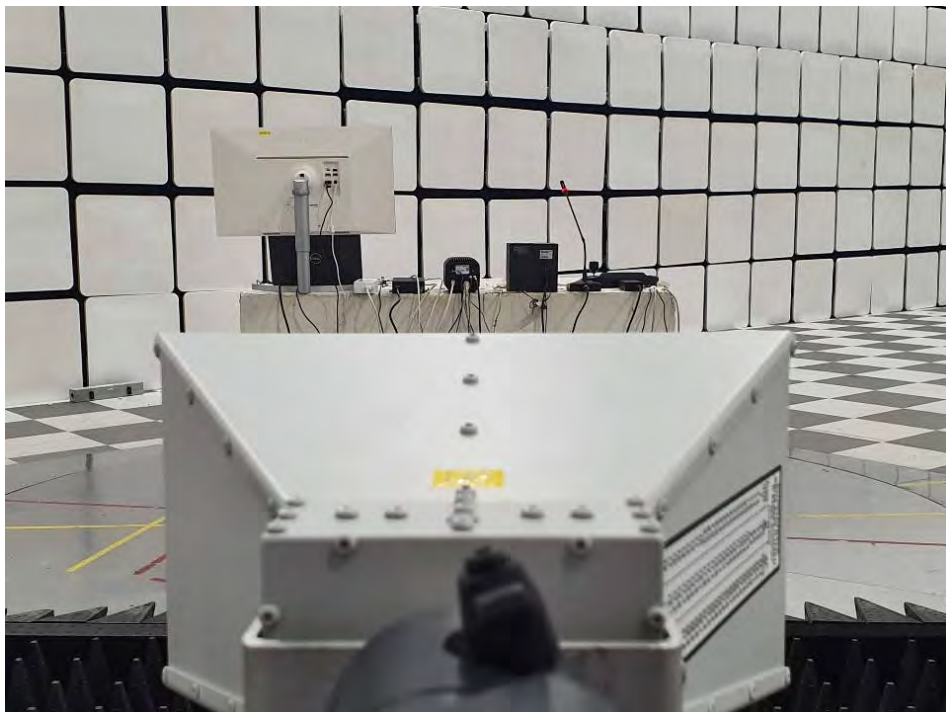
This report shall not be reproduced except in full, without the written approval of KES Co., Ltd.
The results shown in this test report refer only to the sample(s) tested unless otherwise stated.
The authenticity of the test report, contact shchoi@kes.co.kr

Radiated Electric Field Emissions(Below 1 GHz)



This report shall not be reproduced except in full, without the written approval of KES Co., Ltd.
The results shown in this test report refer only to the sample(s) tested unless otherwise stated.
The authenticity of the test report, contact shchoi@kes.co.kr

Radiated Electric Field Emissions(Above 1 GHz)



This report shall not be reproduced except in full, without the written approval of KES Co., Ltd.
The results shown in this test report refer only to the sample(s) tested unless otherwise stated.
The authenticity of the test report, contact shchoi@kes.co.kr

EUT External Photographs

(Top)



(Bottom)



This report shall not be reproduced except in full, without the written approval of KES Co., Ltd.
The results shown in this test report refer only to the sample(s) tested unless otherwise stated.
The authenticity of the test report, contact shchoi@kes.co.kr

EUT Internal Photographs

(Internal View)



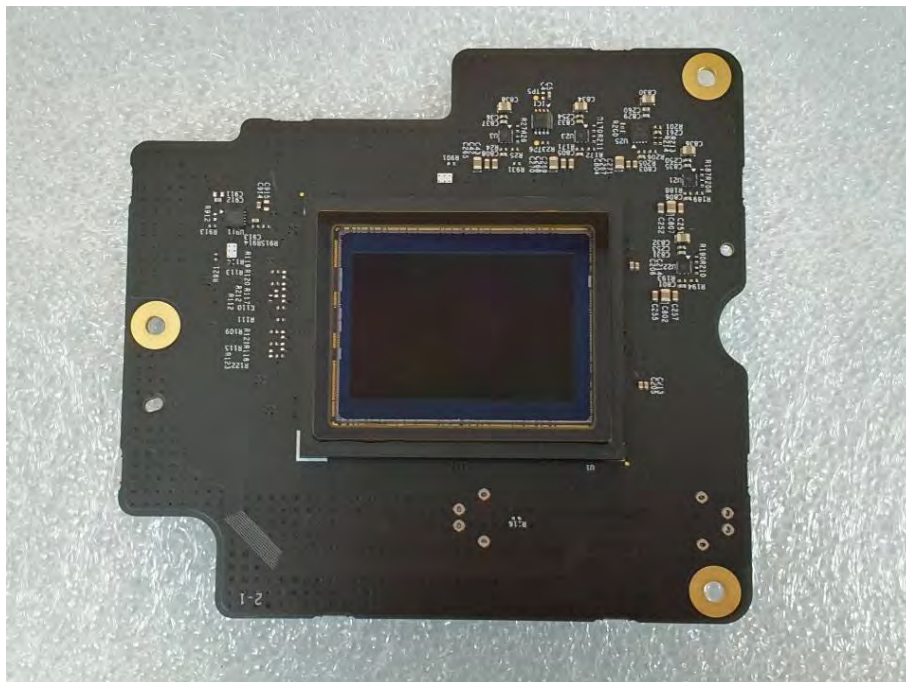
This report shall not be reproduced except in full, without the written approval of KES Co., Ltd.
The results shown in this test report refer only to the sample(s) tested unless otherwise stated.
The authenticity of the test report, contact shchoi@kes.co.kr

EUT Internal View – Board 1

(Top)



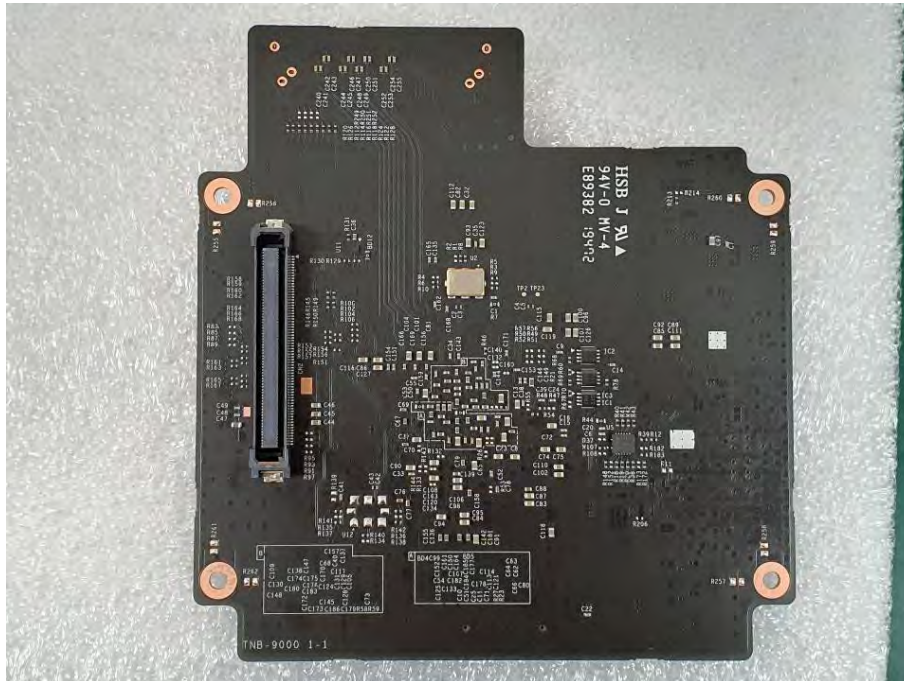
(Bottom)



This report shall not be reproduced except in full, without the written approval of KES Co., Ltd.
 The results shown in this test report refer only to the sample(s) tested unless otherwise stated.
 The authenticity of the test report, contact shchoi@kes.co.kr

EUT Internal View – Board 2

(Top)



(Bottom)



This report shall not be reproduced except in full, without the written approval of KES Co., Ltd.
 The results shown in this test report refer only to the sample(s) tested unless otherwise stated.
 The authenticity of the test report, contact shchoi@kes.co.kr

EUT Internal View – Board 3

(Top)



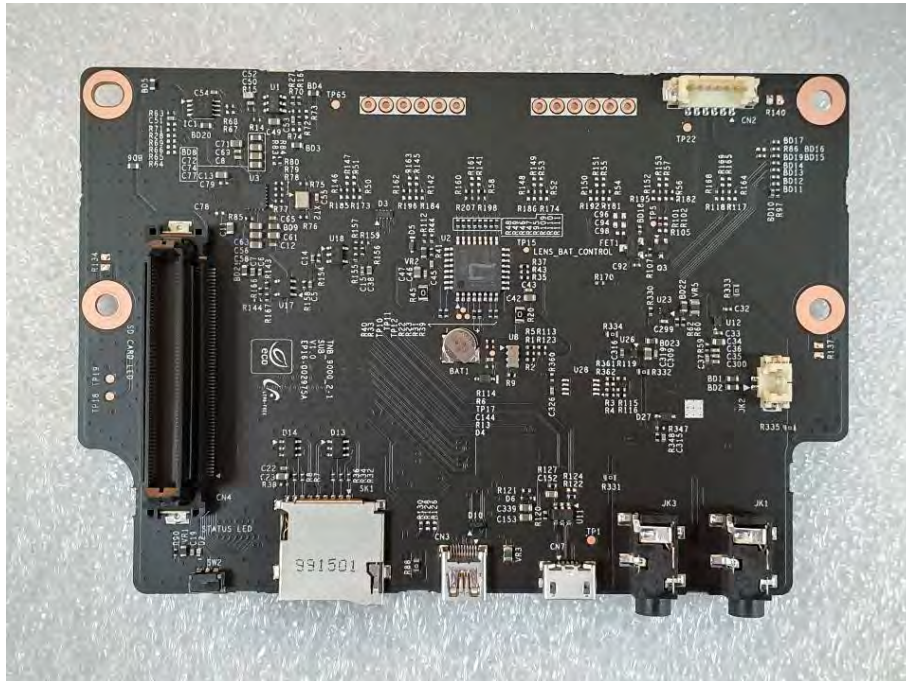
(Bottom)



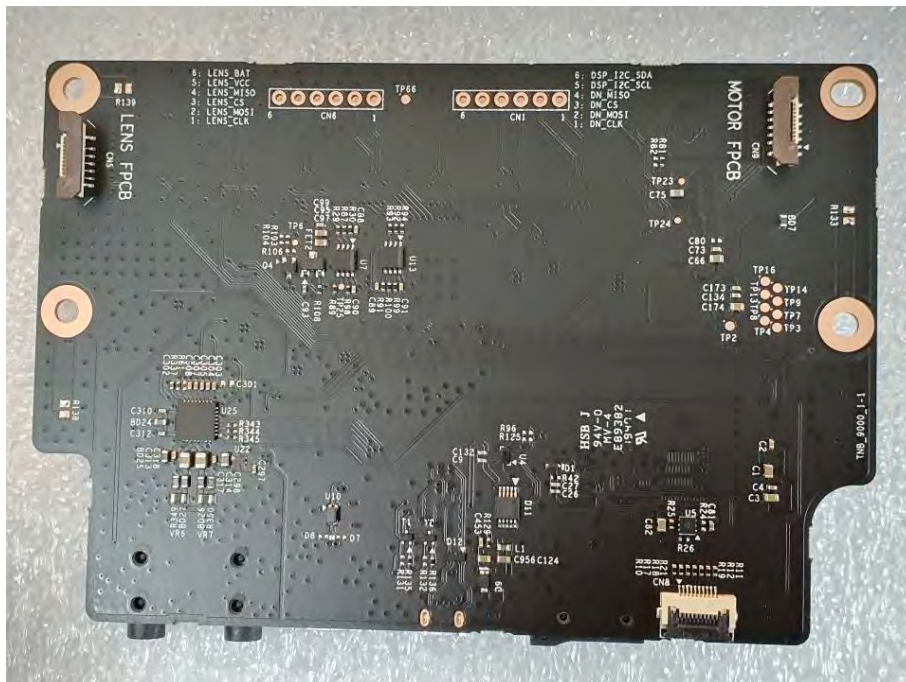
This report shall not be reproduced except in full, without the written approval of KES Co., Ltd.
 The results shown in this test report refer only to the sample(s) tested unless otherwise stated.
 The authenticity of the test report, contact shchoi@kes.co.kr

EUT Internal View – Board 4

(Top)



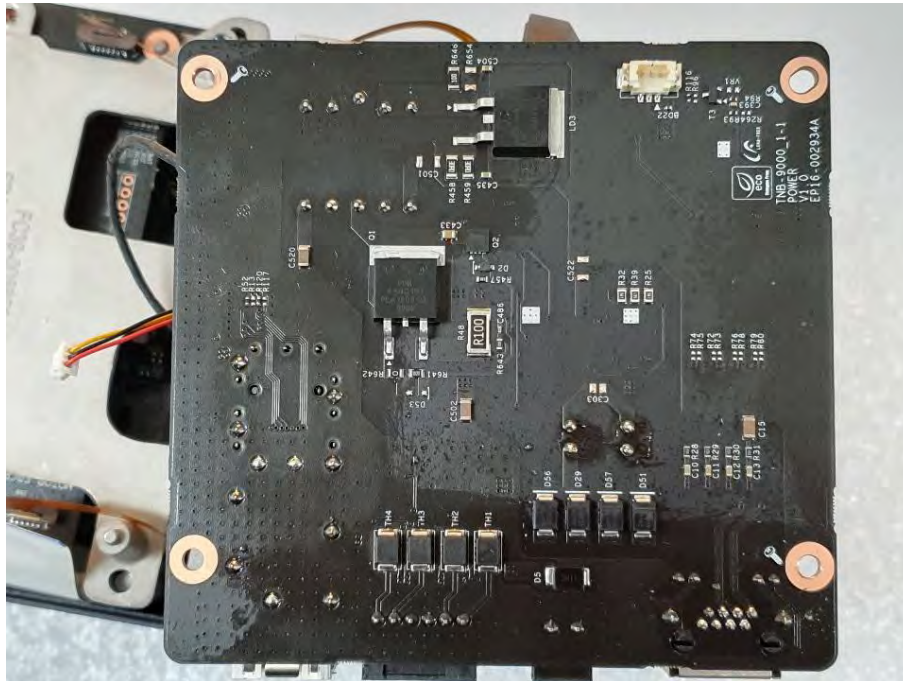
(Bottom)



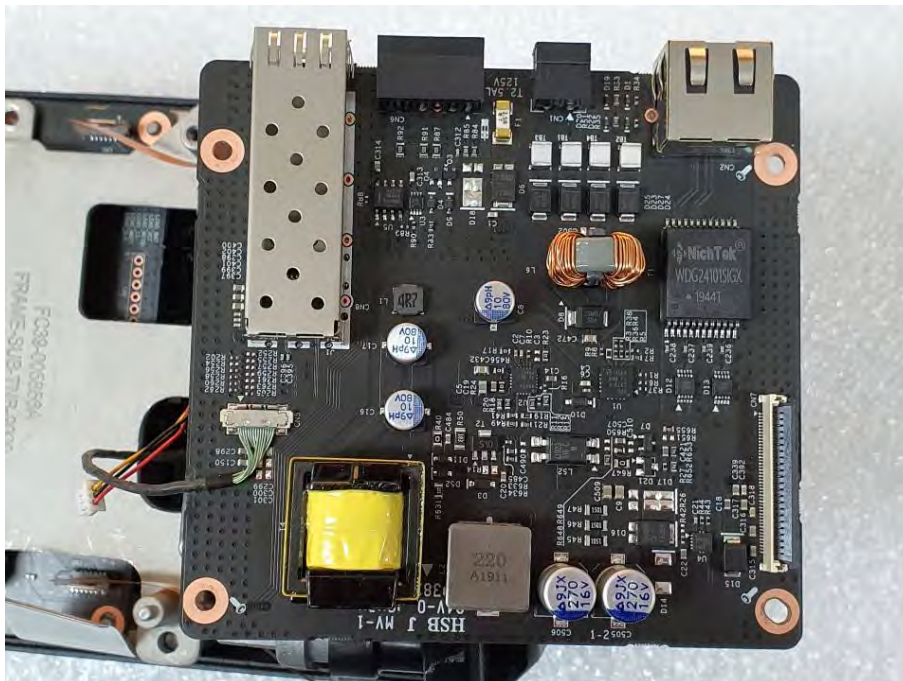
This report shall not be reproduced except in full, without the written approval of KES Co., Ltd.
 The results shown in this test report refer only to the sample(s) tested unless otherwise stated.
 The authenticity of the test report, contact shchoi@kes.co.kr

EUT Internal View – Board 5

(Top)



(Bottom)



This report shall not be reproduced except in full, without the written approval of KES Co., Ltd.
 The results shown in this test report refer only to the sample(s) tested unless otherwise stated.
 The authenticity of the test report, contact shchoi@kes.co.kr

Label Photographs



CAN ICES-3(A) / NMB-3(A)

This device complies with part 15 of the FCC Rules. Operation is subject to the following two conditions: (1) This device may not cause harmful interference, and (2) this device must accept any interference received, including interference that may cause undesired operation

This device complies with Industry Canada license-exempt RSS standard(s). Operation is subject to the following two conditions: (1) this device may not cause interference, and (2) this device must accept any interference, including interference that may cause undesired operation of the device.

Le présent appareil est conforme aux CNR d'Industrie Canada applicables aux appareils radio exempts de licence. L'exploitation est autorisée aux deux conditions suivantes :

(1) l'appareil ne doit pas produire de brouillage, et (2) l'utilisateur de l'appareil doit accepter tout brouillage radioélectrique subi, même si le brouillage est susceptible d'en compromettre le fonctionnement.