

WISENET



SURVEILLANCE SOFTWARE

WISENET SSM

WISENET

Hanwha Techwin Europe

Heriot House, Heriot Road, Chertsey, Surrey, KT16 9DT, United Kingdom
Tel : +44.1932.57.8100
Fax : +44.1932.57.8101
www.hanwha-security.eu

© 2018 Hanwha Techwin Co., Ltd. All rights reserved.

DESIGN AND SPECIFICATIONS ARE SUBJECT TO CHANGE WITHOUT NOTICE
Under no circumstances, this document shall be reproduced, distributed or changed,
partially or wholly, without formal authorization of Hanwha Techwin Co., Ltd.



hanwha-security.eu



Convenience for everyone

WISENET SSM



Features

• Centralised Management

Operators can configure all servers, cameras, recorders as one system and manage user/group policy with an easy user interface.

• Distributed Computing Architecture

Wisenet SSM's modular architecture allows the software to effectively manage any system, from low-end solutions to enterprise level installations.

• Extended Scalability

Wisenet SSM is suitable for both small installation and larger installations, with numerous features for enterprise systems including Federation, Failover, Transaction Server and 3rd party integration.

• Guaranteed Reliability

Failover redundancy controls, automatic network-fail recovery (ARB) and a full system dashboard ensure that your Wisenet SSM system will operate reliably at all times.

• Flexible System Architecture

The Transaction Server functionality provides easy integration with third party systems, including access control and intrusion detection.

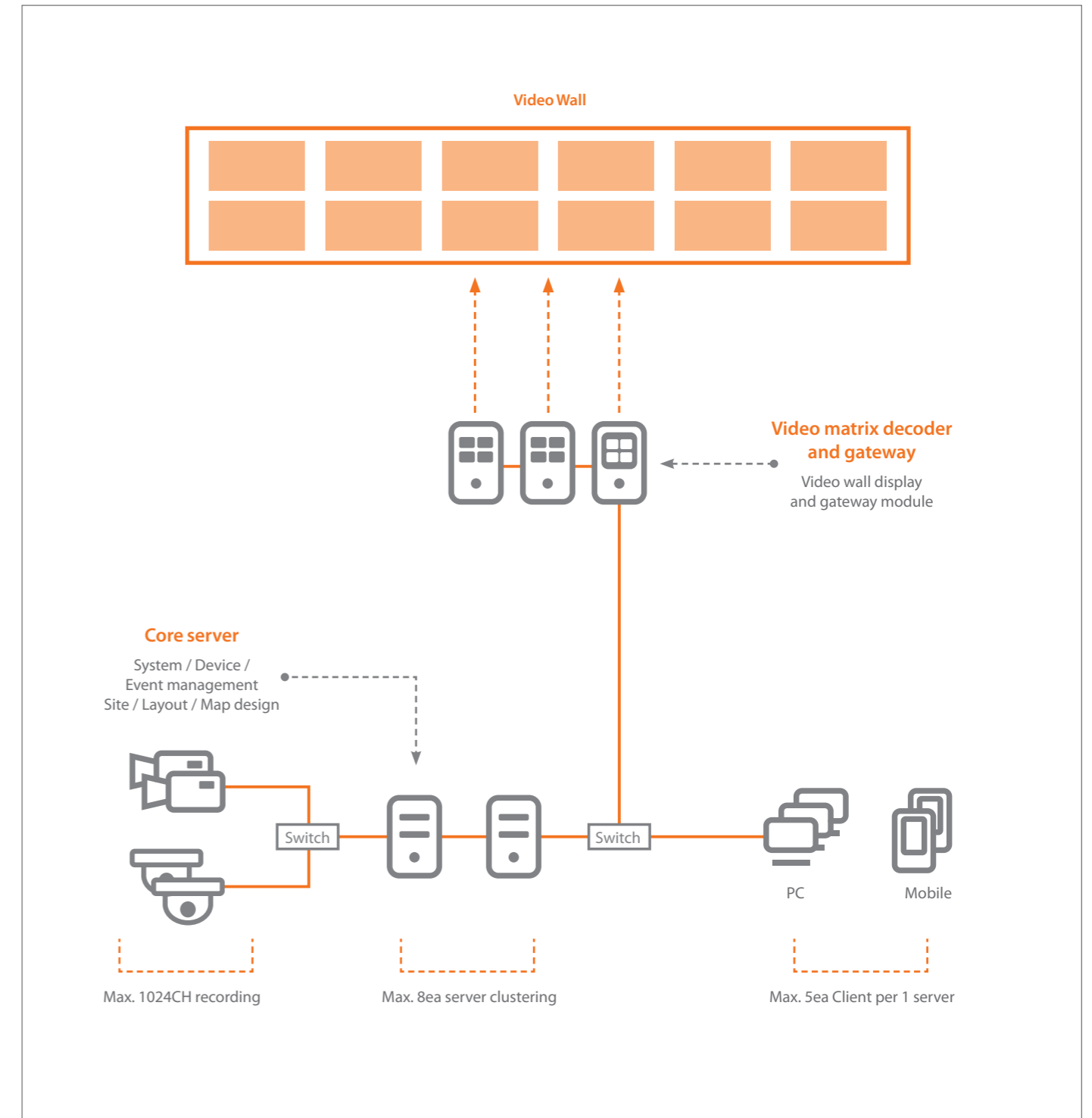
• Efficient Monitoring

Fully configurable event rules and configurations make it easy for system operators to identify important incidents.

• Powerful Search Engine

Wisenet SSM offers a wide range of search options which can assist operators to quickly and easily retrieve evidential data.

System configuration



Full Core Feature / 45 Days

Users are given a 45 days trial period before they can start activating their license. During the trial period, all features are available for use including recording. After the trial, Wisenet SSM will generate a warning message and only limited features will be available.



Easy Playback in Live Streaming & New Timeline

With Wisenet SSM's user friendly interface, operators can playback recorded video during live streaming and easily control playback up to 32x as well as reverse playback. In addition, you can select a specific image for search. Wisenet SSM displays the events in the same area as thumbnails making it easier to carry out a detailed search.



Live

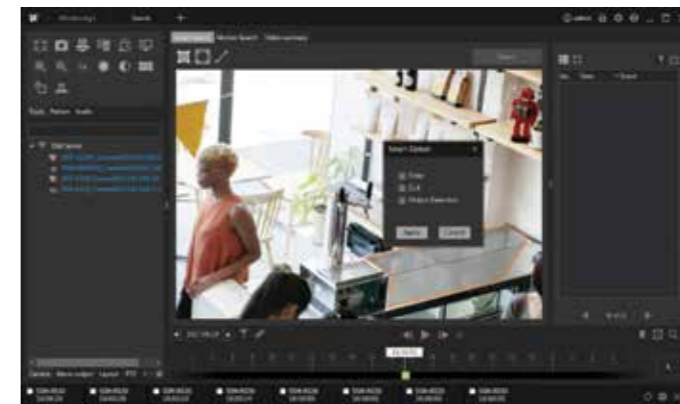


Playback

Searching mode options

Wisenet SSM provides 3 major types of advanced search mode for quick evidence retrieval.

- Smart Search can search by virtual area and virtual line
- Motion Search (and Thumbnail Search) can retrieve evidence within a very short period of time.
- Video Summary is one of the key features of Wisenet SSM providing a minute-long clip of 24 hours of recorded video.



Smart search

Efficient monitoring through powerful event management

All event-related features such as event priority, event colouring, rule-based event action setup and realtime event thumbnail display enable more efficient monitoring. Wisenet SSM can also provide a separate event viewer window that provides real-time event logs with a single channel preview.

- Operators can monitor each event and add notes.
- Audio broadcasting is also available so that warnings can be issued in a dangerous event situations.



Specifications

System		
Maximum Number of Monitoring Channel		Up to 10,000 Channels / domain
Maximum Number of Recording Channel		Up to 10,000 Channels / domain
Architecture		Server / Client
Clients		Console Client, Mobile Viewer
Supported Devices		Network camera / encoder / decoder, DVR / NVR, Controller
Basic Component		
Core Server	Centralised License Management	45 days free trial
	Server Clustering	Data sharing, Failure management
	System Dashboard	Real-time system status monitoring
	User Management	Device access authority, Feature level authority
	Federation	Multi-tier domain federation, Max 100 domains
	Centralised Device Configuration	Auto / Manual Device and add-on server registration
	Device Connection	Up to 3,000 Channels
	Event Configuration	4 levels event priority, Configurable event color
	Event Action	Rule based event and triggering action setup
	Layout & Pattern	User defined layout and tile pattern
Console Client	Tab Based Window	Live, Advanced search, Event, Configuration
	Number of Channels	Max 100 channels, Max 64 channels per tab
	Decoding	Hardware accelerator supported (NVIDIA CUDA)
	Playback	Multi channel playback, Bookmark
	Real-time Event	Event filtering by status, type, and priority
	Event Search	Event acknowledgement history
	Smart Search	Search by virtual area and virtual line

Memo
